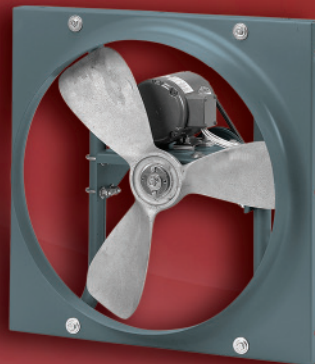
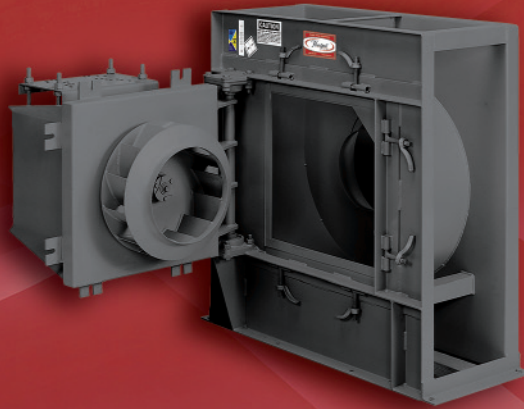




Quality • Value • Commitment

AIR MOVEMENT



www.hartzell.com

Industrial Fan Guide

General Ventilation Equipment

Hartzell Air Movement offers an array of quality built general ventilation equipment to help move uncontained air more effectively than ever. Our selection includes dilution ventilation (intake, exhaust, filtered, and re-circulation), make-up air and personnel or equipment cooling.

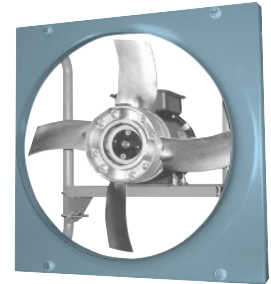
- Longer service life—and superior performance—compared to competition
- Economical, yet rugged enough for heavy-duty, demanding applications
- Multiple propeller options to meet your specific demands
- Customized solutions for special applications
- Motors and drives quickly accessible for easy maintenance

Propeller Fans and Wall Ventilators

Designed for general ventilation, smoke and fume removal, cooling, air supply or exhaust applications, our propeller fans and wall ventilators include standard and lo-noise ring and panel fans as well as reversible and belted high-volume ring fans ranging in size from 12" to 144" and offering from 1475 to 327,000 CFM at 0" S.P.



Ring and Panel Fans available in standard or reverse flow, general industrial duty or heavy industrial duty. Sizes 12" – 60". Series 01, 02, 08, 09, 10, 14 See bulletin A109*



Cool Blast Fans

Cool blast fans are ideal for cooling personnel or equipment, smoke diffusion, product cooling and insect dissipation.



Cool Blast Fans. Sizes 20" – 48" and 4,168 – 32,700 CFM at free air. Series 20, 21, 22, 23 See bulletin A120*



Our HartKool Air Circulating Fans. Sizes 18" – 36" and 4,236 – 13,450 CFM at free air. Series HKA See bulletin A120*

* See website for all bulletins

General Ventilation Equipment *(continued)*

Roof Ventilators

Hartzell roof ventilators are designed as packaged units, ready for installation and available in exhaust, intake, reversible and recirculating.



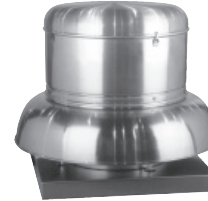
Upblast Exhauster. Direct Drive and Belted Models. Sizes 12" – 84" and 1,390 – 124,500 CFM at free air. Series 61, 63
*See bulletin A157**



Upblast and Smoke Ventilators. Sizes 18" – 60" and 3,220 – 64,035 CFM at free air. Series 69
*See bulletin A157**



Hooded and Re-circulating Roof Ventilators. Sizes 18" – 84" and 3,175 – 135,500 CFM at free air. Series 15, 16, 17, 26, 27
*See bulletin A157**



Centrifugal Dome Wall and Upblast Roof Ventilators. Direct, Belt Drive and Gravity Relief. Sizes 7" – 54". Series HDD, HBD, HDU, HDW, HBU, HBW
*See bulletin A156**

Process Ventilation Equipment

Hartzell Air Movement provides a complete line of process ventilation fans and blowers to help you control or contain the movement of air contaminated by fumes, dust, corrosives, temperatures or materials from one point to another.

- Wide range of types and styles for air volume, static pressure and temperature challenges
- Heavy-duty equipment for industrial demands
- One-stop source for all your fan needs
- Innovative, versatile designs and quality construction built to last
- The right fan for every job
- Customized solutions for your unique ventilation problems

Axial Flow Fans

Direct and belt drive axial flow fans designed to handle a broad range of static pressures for process and air temperature applications.

Belt or Direct Drive Duct, Duct Axial Fans, Adjustable Pitch Duct Axials and our Fixed Pitch and Adjustable Pitch Vaneaxial Fans. Sizes 12" – 96". Up to 76,950 – 232,500 CFM. S.P. from 1 1/4" – 10".



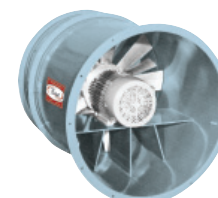
Duct Fans. Series 31, 38, 39, 52
*See bulletin A130**



Duct Axial Fans. Series 46, 48
*See bulletin A118**



Vaneaxial Fans. (Fixed Pitch) Series 25, 53, 54, 55
*See bulletin A110**



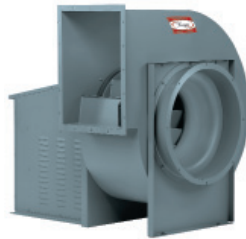
Vaneaxial Fans. (Adjustable Pitch) Series 65, 66, 67
*See bulletin A142**

* See website for all bulletins

Process Ventilation Equipment *(continued)*

Centrifugal Fans

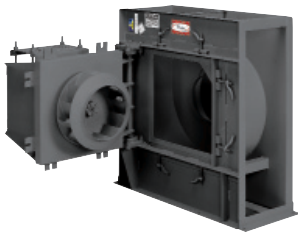
Variety of types and sizes of backward curve, airfoil and material handling fans designed to accommodate both clean air and material conveying applications at ambient and higher temperatures.



Backward Curved Centrifugal Fans.
Sizes 12" – 60".
Up to 99,960 CFM and S.P. to 14".
Series 03
*See bulletin A147**



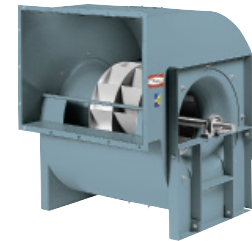
Square Type BC Fans.
Sizes 10" – 49".
Up to 64,000 CFM and S.P. to 14".
Series 03Q
*See bulletin A147**



Swing-Out Centrifugals.
Sizes 12" – 60".
Class I, II, III.
Series 03S
*See bulletin A147**



Plug Fans.
Sizes 12" – 60".
Class I, II, III.
Series 11
*See bulletin A147**



Double-Wide Centrifugal Fans.
Sizes 10" – 60".
Up to 186,000 CFM and S.P. to 14".
Class I, II, III.
Series 13
*See bulletin A147**



In-line Centrifugal Fans.
Sizes 12" – 49".
Up to 70,000 CFM and S.P. to 13".
Series 04
*See bulletin A154**



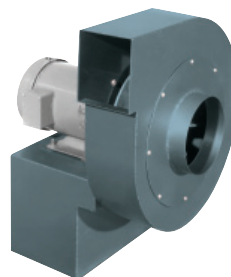
Industrial Exhausters come in four wheel types.
Sizes 12" – 57".
Up to 46,625 CFM and S.P. to 46".
Series 05
*See bulletin A155**



Flange Mounted Industrial Exhausters.
Sizes 12" – 33".
Up to 11,000 CFM and S.P. to 16".
Series 05F
*See bulletin A155**



Turbo Pressure Blowers.
Sizes 14" – 26".
Up to 100 – 5,250 CFM and S.P. to 60".
Series 07T
*See bulletin A135**



Pressure Blowers.
Sizes 11", 12" and 14".
Up to 1,660 CFM and S.P. to 5".
Series 07
*See bulletin A134**

* See website for all bulletins

Fiberglass Equipment

Hartzell Air Movement pioneered the development of fiberglass corrosion resistant fans and blowers. And today we manufacture one of the most complete lines of fiberglass products in the industry, a line that includes fans for general and process ventilation applications. Fiberglass construction is recommended where corrosive elements exist in fume or vapor form.

- Broad range of products for any corrosive application
- Lightweight, yet extremely strong for a long service life
- A variety of fiberglass props with airfoil design
- Moisture-resistant coating (HartKoate) available where both moisture and corrosives exist in the airstream
- Time-tested, reliable performance and long-lasting durability

General Ventilation

Our fiberglass wall and roof ventilators are a major advantage for general ventilation applications where concentrations of corrosive elements exceed the limits of standard fans. Fiberglass also offers additional advantages such as weight, high strength to weight ratio and dimensional stability.



Fiberglass Upblast and Downblast Dome Exhausters in belt and direct drive.
Series 82, 83, 87, and 88
*See bulletin A161**



Hartzell Fiberglass Upblast and Hooded Roof Ventilators include direct drive and belt drive models.
Sizes 12" – 60" and 1,260 to 63,470 CFM at free air.
Series 37, 57, 58E
*See bulletin A141**



Fiberglass Wall Ventilators.
Sizes 12" – 60" and 1,315 – 55,500 CFM at free air.
Series 59
*See bulletin A137**



Process Ventilation —Axial

Fiberglass direct and belt drive axial flow fans designed for a corrosive air-stream application where standard metallic fans will not work due to the environment.



Fiberglass Duct Fans.
Sizes 12" – 60".
Up to 43,000 CFM.
Series 34
*See bulletin A139**



Fiberglass Duct Axial Fans.
Sizes 12" – 60".
Up to 77,175 CFM.
Series 35
*See bulletin A139**



Fiberglass Bypass Fans.
Sizes 24" – 48".
Up to 46,145 CFM.
Series 28B, 29B
*See bulletin A139**

Process Ventilation —Centrifugal

Fiberglass centrifugal fans offer non-overloading, high efficiency, low noise and economy for handling both fumes and vapors in a corrosive atmosphere.



Backward Curved Centrifugal Fans.
Sizes 12" – 60".
Up to 90,000 CFM and S.P. to 18".
Series 41
*See bulletin A160**



Fiberglass Radial Blowers.
Sizes 12" – 33".
Up to 11,400 CFM and S.P. to 16".
Series 42, 43
*See bulletin A140**



Fiberglass In-line Centrifugal Fans.
Sizes 12" – 60".
Up to 85,000 CFM and S.P. to 12".
Series 40
*See bulletin A131**

* See website for all bulletins

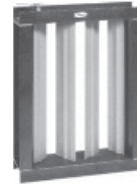
Fiberglass Equipment *(continued)*

Fiberglass Air Control Products

Hartzell's fixed blade louvers, end-pivoted shutters, and our center-pivoted low-velocity and high-velocity dampers help prevent back drafts and control air intake or relief. Designed for corrosive applications. They are available in standard and custom sizes.



Fiberglass End Pivoted Shutter for gravity backdraft prevention.
Series FEP
See bulletin A138*



Fiberglass Center-Pivoted High-Velocity Damper for volume control backdraft prevention.
Series FCO, FCP
See bulletin A138*

Make-Up Air and Heating Equipment

Our selection of gas and steam-fired make-up air equipment is as versatile as it is complete. You can use our equipment to supply tempered make-up air in the plant to help eliminate negative pressure and "sick building syndrome" or as a total fresh air system. We also have door heaters to meet all plant heating requirements, as well as recirculation and cooling.

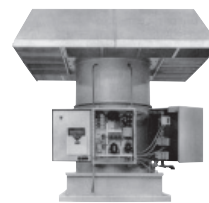
- Broad performance range
- Custom capabilities for both cooling and heating needs
- Most efficient method available for heating supply air from outdoors
- Helps other fan systems and process equipment operate more effectively
- Re-circulation option available

Gas & Steam-Fired Equipment

Direct gas-fired and steam-fired make-up air available with propeller, backward curved, and forward curved centrifugal wheels all designed to eliminate hot and cold spots in the plant, supplying fresh, clean air at the right temperature. Existing ventilation systems will work better, which accommodates more effective employees and production systems. Modular design that can be configured to meet specific requirements.



Gas-fired Make-Up Air Heaters with heating capacities from 200,000 to 10,000,000 BTU/HR. Up to 100,000 CFM at 2" S.P.
Series GFC
See bulletin A125*



Vertical and horizontal econo unit for low cost alternative to make-up air problems. Heating capacities from 950,000 to 2,900,000 BTU. Up to 23,500 CFM at 1/4" S.P.
Series 78H, 78V
See bulletin A125*



Gas-fired Door Heaters are available with heating capacities from 700,000 to 990,000 BTU. Up to 7,900 CFM at 0" S.P.
Series 79
See bulletin A125*

* See website for all bulletins

Specialty & OEM Products

Hartzell Air Movement also offers a wide variety of products designed and built for special applications and for the unique demands of OEMs.

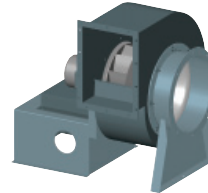
- Reliable, proven performance for marine applications
- Dimensional stability assures trouble-free operation
- Customized to meet your specific requirements
- Quick turnaround on OEM products and parts deliveries
- Competitive pricing

Marine & Mine Duty Fans

Marine and mine duty axial and centrifugal fans designed specifically to meet the severe application conditions found in typical marine and mine environments. Designed for reliability, low maintenance, long life, corrosion resistance and heavy duty construction.



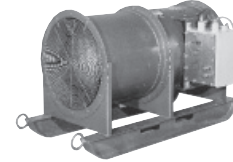
Marine Duct Axial®.
Sizes 12" – 60".
Up to 92,000 CFM,
S.P. to 4".
Series 44 M
*See bulletin A143**



Marine Centrifugal Fans.
Sizes 12" – 33".
Up to 27,341 CFM at
free air.
Series 03M
*See bulletin A143**



Marine Vaneaxial Blowers.
Sizes 8" – 79".
Up to 200,000 CFM at
0" S.P.
Series 65CM
*See bulletin A143**



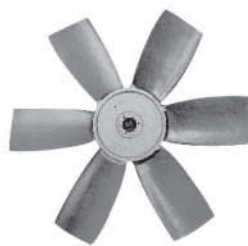
Mine Booster Fans.
Sizes 14" – 48".
and 57,200 CFM,
S.P. to 14".
Series 51
*See bulletin A146**

OEM Products & Parts

Hartzell meets the needs of OEMs with both standard and customized products designed specifically for the OEM's equipment, package or system requirements. Hartzell's product lines and customization capabilities provide solutions for a broad range of environmental air moving problems.

Other OEM Products:

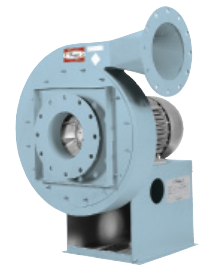
Duct Fans, Plug Fans, Plenum Fans, DWDI Fans, Square Centrifugal Fans, Bin Vent Fans



Hartzell Propellers are available in various sizes, blade types and materials in 2, 3, 4, 6 and 8 bladed props. *Request OEM guide.*



Hartzell Centrifugal Wheels come in a variety of sizes and wheel widths; backward curved, radial, material and air handling wheels are also available. *Request OEM guide.*



Turbo Pressure Blowers. Sizes 14" to 26". Up to 100 – 5250 CFM and S.P. to 60". *See bulletin A135**

* See website for all bulletins

Quality • Value • Commitment

More than mere words, Hartzell designs and manufactures quality into every air movement product we deliver to provide the exceptional value our customers deserve. This is the way we have done business since our founding in 1875, and it remains our trusted commitment to you today!

Hartzell fans stand out from all the rest by providing value-added customer benefits that include:

- One of the most complete AMCA-certified lines of industrial fans in the industry
- Optimum efficiency and maximum energy savings from every fan we produce
- Technological advancements in fan design and manufacturing for superior fan performance and long-lasting reliability

- Protection against corrosion from acids, gases, salts and solvents with corrosive-resistant fiberglass products
- Quality fans backed by the industry's leader

Contact Hartzell today for all your air movement needs!



AIR MOVEMENT

Hartzell Air Movement
910 South Downing Street
Piqua, Ohio 45356

1-800-336-3267
www.hartzell.com
info@hartzell.com