

- Nanofiber technology ensures longer filter life at a significantly lower pressure drop
- Specially designed for dry, high temperature applications
- MERV\* 14 filtration efficiency rating per ASHRAE 52.2-2007
- Very good choice for metallurgical, chemical, and industrial applications including foundry shake out, drying of silica gel, & aggregate drying
- Exceptional filtration at temperatures up to 275°F (135°C)
- Very good chemical tolerance
- Good abrasion resistance



Thermo-Web™ Cartridge

### APPLICATIONS

- Metallurgical, chemical, and industrial applications including foundry shakeout and shot blast, drying of silica gel, carbon manufacturing, raw and finish milling of cement, and aggregate drying
- Stainless steel Thermo-Web is recommended for applications requiring good chemical tolerance
- High temperature applications

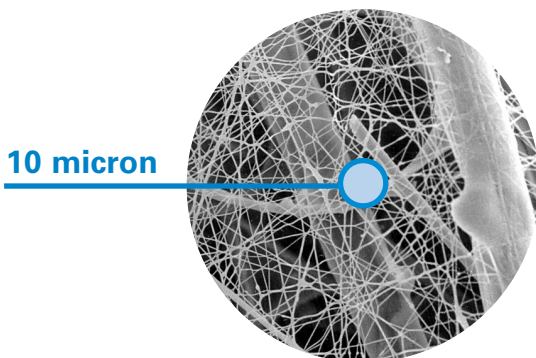
### THE ULTRA-WEB ADVANTAGE IS CLEANER AIR

Ultra-Web<sup>®</sup> is proprietary and made with an electrospinning process that produces a very fine, continuous, resilient fiber of 0.2-0.3 micron in diameter to form a permanent web-like net. This nanofiber “web” with its very fine interfiber spaces is constructed onto tough synthetic substrate media, resulting in:

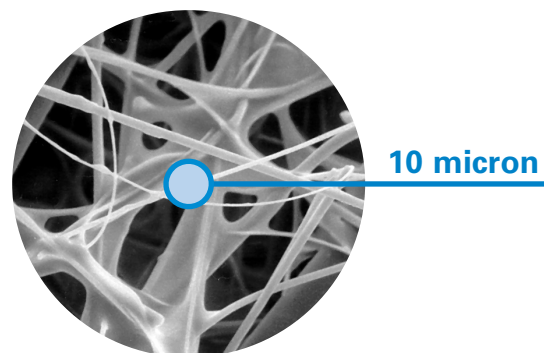
- A more robust media that captures even submicron dust on the surface
- Better pulse cleaning and lower pressure drop
- Cleaner air, longer filter life, and greater cost savings

### SEM<sup>†</sup> IMAGES

1 micron = 1/25,400 of an inch (1/1000 of a millimeter)



Thermo-Web™ Media (600x)



Synthetic Media (600x)

## SPECIFICATIONS

MEDIA COMPOSITION	
Nanofiber Technology	Proprietary synthetic nanofibers Mean fiber diameter of 0.2 μm
Substrate	Proprietary blend of synthetic fibers Maintains strength and filtration capabilities at temperatures up to 275°F/135°C

CARTRIDGE CONSTRUCTION	
Standard Construction	Galvanized expanded metal liner 72% open area Galvanized metal end caps Special adhesives and gaskets for structural and sealing integrity at higher temperatures
Options	Optional stainless steel liner and end caps

MEDIA COMPATIBILITY DATA	
Temperature Resistance	275°F / 135°C
Moisture Absorption**	Maximum 14% @ 70°F (21°C) and 65% RH
Chemical Tolerance***	Acids→Good      Oxidants→Good Bases→Good      Solvents→Good
Abrasion Resistance	Good per TAPPI 476 (Taber Method)

MEDIA EFFICIENCY	
U.S. Efficiency Rating	MERV* 14 per ASHRAE 52.2-2007

## CONFIGURATIONS

Collector	Filter Area		Pleat Height		Dimensions	
	ft²	m²	in	mm	in	mm
Bin Vent (TBV)	182.0	16.9	2.0	50.8	12.74 x 26.0	323.6 x 660.4
Downflo® (DF)	182.0	16.9	2.0	50.8	12.74 x 26.0	323.6 x 660.4
Downflo II (DFT)	198.0	18.4	2.0	50.8	13.84 x 26.0	351.5 x 660.4
Downflo Containment System (DCS)	148.0	13.8	1.5	38.1	11.4 x 14.4 x 26.0	288.5 x 364.7 x 660.4
Downflo® Oval (DFO)	148.0	13.8	1.5	38.1	11.4 x 14.4 x 26.0	288.5 x 364.7 x 660.4
Downflo® Evolution (DFE)	194.0	18.0	2.0	50.8	13.74 x 13.74 x 26.0	349.1 x 349.1 x 660.4
Downflo Workstation (DWS)	148.0	13.8	1.5	38.1	11.4 x 14.4 x 26.0	288.5 x 364.7 x 660.4
MTD	182.0	16.9	2.0	50.8	12.74 x 26.0	323.6 x 660.4
TD Large	182.0	16.9	2.0	50.8	12.74 x 26.0	323.6 x 660.4
TD Small	73.0	6.8	2.0	50.8	7.9 x 22.0	201.4 x 558.8
	52.0	4.8			7.9 x 16.0	201.4 x 406.4

\* The Minimum Efficiency Reporting Value (MERV) of this filter cartridge has been determined through independent laboratory testing using ASHRAE 52.2 (2007) test standards. The MERV rating was determined at a face velocity of 118 feet per minute (36.0 meters per minute) and loading up to four inches (101.6 millimeters) water gauge. Actual efficiency of any filter cartridge will vary according to the specific application parameters. Dust concentration, airflow, particle characteristics, and pulse cleaning methods all affect filtration efficiency.

\*\* Environmental conditions involving combinations of high temperature, corrosive material, and moisture can reduce media strength. Reduction in media strength may compromise cartridge integrity and performance.

\*\*\* A combination of chemicals may alter fiber resistance to the specified performance level. Chemical attack may compromise cartridge integrity and performance.

Significantly improve the performance of your collector with genuine Donaldson Torit replacement filters and parts. **Call Donaldson Torit today 800-365-1331.**



Tel 800-365-1331 (USA)  
Tel 800-343-3639 (within Mexico)  
donaldsontorit@donaldson.com  
donaldsontorit.com  
Donaldson Company, Inc.  
Torit  
P.O. Box 1299  
Minneapolis, MN  
55440-1299 U.S.A.

**EXACTLY WHAT YOU NEED.™**

**Thermo-Web Cartridge (6/15)**  
© 1995 Donaldson Co., Inc. All Rights Reserved. All products, product specifications, and data (airflow, capacity, dimensions, or availability) are subject to change without notice, and may vary by region or country. Donaldson Torit is a registered trademark of Donaldson Company, Inc. Contains Donaldson proprietary technology.